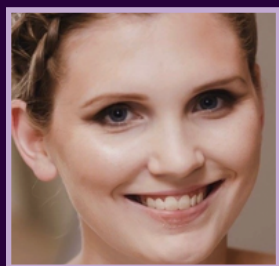


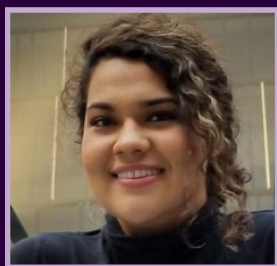
# BEST PRACTICES FOR PROMOTING DIVERSITY, EQUITY, AND INCLUSION WITHIN THE CF CLINIC SETTING

Faces of CF 2026 Virtual Diversity Workshop Series

## GUEST SPEAKERS



Claire Haglund  
PhD, LMSW



Monsé Meza  
LCSW



Melissa Alao  
LICSW



Annie Thomas-Diceman  
RSW

Join us for an engaging conversation focused on promoting equity and inclusion within the CF clinic setting. Discover innovative, patient-centered initiatives CF care teams are using to improve care in clinics across North America.

## REGISTER

[Register here](#)



- ✓ Language accessibility approaches
- ✓ Adaptive surveying protocols
- ✓ Center-wide research projects



**March 2, 2026 at 12 PM PT**

Made possible with support from Genentech and Viatris.